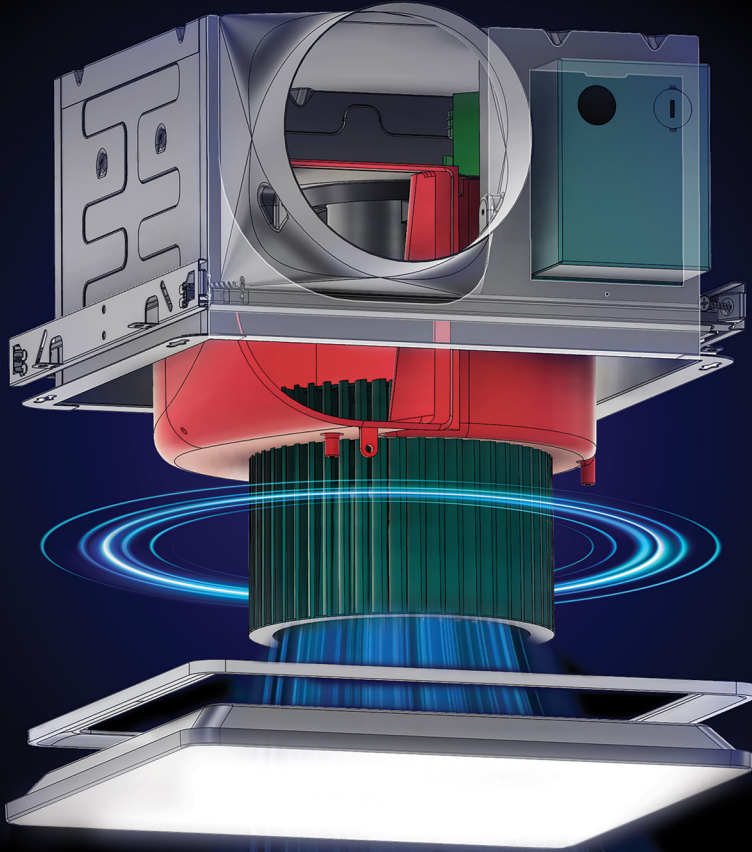


PREMIUM

EVOLVE 

BROAN
NuTone
BETTER AIR. BETTER LIFE.



**GUARANTEED
PERFORMANCE**
with
revolutionary
design

Guaranteed
performance
with
TrueCFM™ 

Near silent

operation

Save
up to **30%**
installation
time

LESS SKUS, MORE FLEXIBILITY

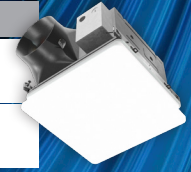
Four base fan SKUs with optional sensing modules for easy fan selection and customization.

STEP 1: Select a fan or fan/light model.

| Fan Model | Description |
|-----------|--|
| PTE511RK | 50-80-110 Selectable CFM with Continuous Run Fan |
| PTE1115RK | 110-130-150 Selectable CFM with Continuous Run Fan |



| Fan/Light Model | Description |
|-----------------|--|
| PTEL511RK | 50-80-110 Selectable CFM with Continuous Run Fan/Light |
| PTEL1115RK | 110-130-150 Selectable CFM with Continuous Run Fan/Light |



| Project Pack | Description |
|--------------|---|
| PTE511RKF | Finish Pack: 50-80-110 Selectable CFM with Continuous Run |
| PTE1115RKF | Finish Pack: 110-130-150 Selectable CFM with Continuous Run |
| PTE511H | Housing Pack: 50-80-110 Selectable CFM |
| PTE1115H | Housing Pack: 110-130-150 Selectable CFM |

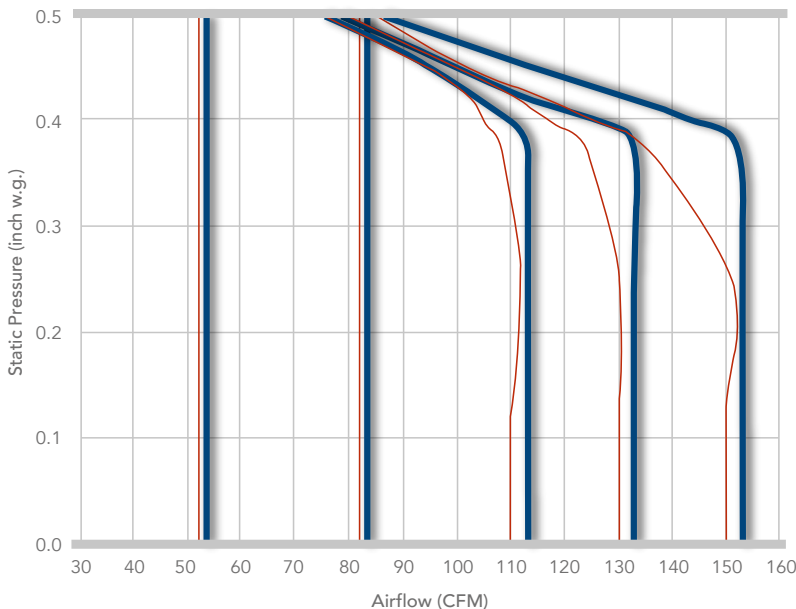
Housing and Finish Pack must be used together for a complete fan.

STEP 2: Select optional accessories.

| Module | Description |
|--------|-------------------------|
| PES | Humidity Sensing Module |
| PEM | Motion Sensing Module |

| Model | Description |
|-------|------------------|
| PTRD | Radiation Damper |

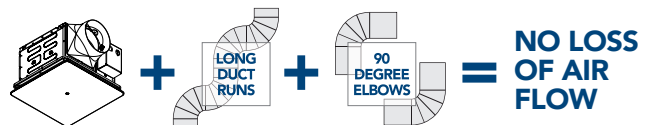
BEST-IN-CLASS PERFORMANCE



← Broan holding CFM up to 0.4" s.p.

← Panasonic begins to see drop-off in CFM at 0.25" s.p.

TrueCFM™ technology maintains CFM performance even with complicated ducting



BROAN-NUTONE.COM/EVOLVE | 800-558-1711
 926 WEST STATE STREET
 HARTFORD, WISCONSIN 53027



Made in USA™
 of US & Imported Parts