

TECHNICAL SPECIFICATIONS

	HV 1.5	HRV 5.1	HRV 7.1
Typical ventilation area	2,000 sq. ft.*	2,700 sq. ft.	3,000 sq. ft.
Rate of air flow (fresh air)	30-55 cfm**	50-94 cfm	50-104 cfm
Total air flow	185 cfm	94 cfm	104 cfm
Filter	Mesh	Foam	HEPA
Diameter of air exhaust outlets and fresh air vents	4 or 5 in.	5 in.	5 in.
Diameter of indoor air ports	6 in.	5 in.	5 in.
Voltage	120 V	120 V	120 V
Power	140 W	42 W	42 W
Annual energy cost (\$)***	275	89	89
Height	12.25 in.	17.5 in.	17.5 in.
Width	23 in.	30.5 in.	33 in.
Depth	15 in.	11.5 in.	11.5 in.
Weight (approx.)	40 lb. (18 kg)	53 lb. (24 kg)	56 lb. (25 kg)
Installation kit (sold separately)	15273	IKSB1000	IKSB1000
Attic installation kit (sold separately)	EA20130	—	—
Optional bathroom installation kit	N/A	IKBB1000	IKBB1000
Wall control (included)	CMR	40410	40410
ENERGY STAR certified	No	Yes	Yes
HVI certified (Home Ventilating Institute)	No	Yes	Yes



* IMPORTANT NOTICE: FOR NEW CONSTRUCTIONS, PLEASE REFER TO YOUR LOCAL BUILDING CODE.
 ** CUBIC FEET PER MINUTE.
 *** USING THE UNIT 80% OF THE TIME DURING HEATING SEASON. DATA FOR MONTRÉAL WITH ELECTRIC HEAT.
 *STANDARD WARRANTY: 1 YEAR, AND EXTEND YOUR WARRANTY BY 1 YEAR IF YOU REGISTER THIS PRODUCT ONLINE.



CUSTOMER SERVICE

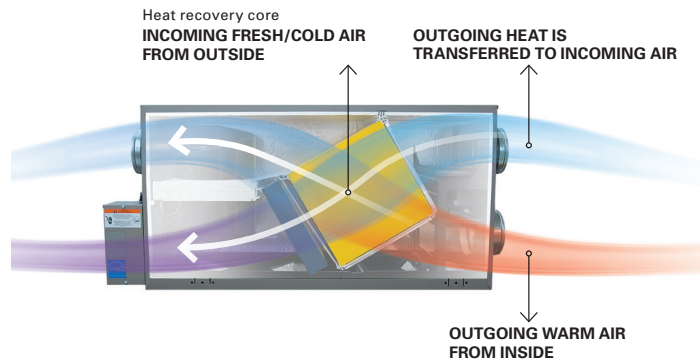
1-800-567-1484

broan.ca

HOW DOES HEAT RECOVERY WORK?

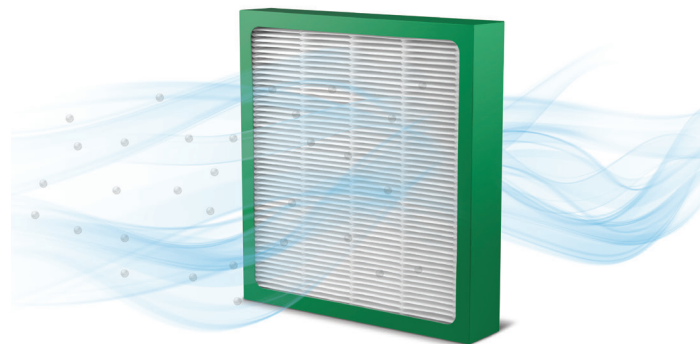
An air exchanger with heat recovery:

- Is ideal for colder climates
- Makes the home more comfortable
- Reduces energy consumption
- Eliminates unpleasant drafts



CHOOSE HEPA FILTRATION

HEPA FILTERS (HIGH EFFICIENCY PARTICULATE AIR) CAPTURE 99.97% OF ALLERGENS AND MICROSCOPIC PARTICLES. THEY CAN CONTRIBUTE TO REDUCING THE SYMPTOMS OF ALLERGIES, ASTHMA, COLDS AND PERSISTENT COUGHING.



91525 20/08

CHOOSE YOUR INSTALLATION OPTION

Do it yourself

Installation can be done with easy-to-use kits that contain all the components you need to install a Broan unit. Each comes with an easy-to-follow installation guide in the box and also online.

Professional installation

A recommended installer will go to your home for an estimate. The cost of the estimate will be deducted from the cost of installation.

To find a Broan-recommended professional installation service in your area, consult the **RIS flyer** (available in this display) or call **1-866-737-7770**.



WHOLE-HOUSE AIR EXCHANGER

Buying guide



WHY DO TODAY'S HOMES NEED VENTILATION?

TODAY'S HIGHLY INSULATED AND WELL-SEALED HOMES TRAP IN HUMIDITY, STALE AIR AND POLLUTANTS. AN AIR EXCHANGER IS AN EFFECTIVE AND ENERGY-EFFICIENT WAY TO CONTINUOUSLY REFRESH THE AIR IN YOUR HOME.

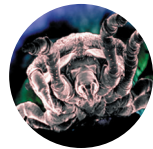
Evacuates stale air and pollutants



Introduces healthful fresh air from outside



Controls excess humidity

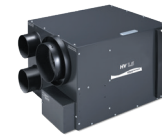


Helps prevent mould and mildew

Minimises odours and cooking residue



CHOOSE YOUR AIR EXCHANGER



HV 1.5
SMALL-SIZE HOME
(UP TO 2,000 SQ. FT.)



HRV 5.1
MEDIUM-SIZE HOME
(UP TO 2,700 SQ. FT.)



HRV 7.1
LARGE-SIZE HOME
(UP TO 3,000 SQ. FT.)



AIR EXCHANGE

Expels polluted indoor air and continually exchanges it with fresh outdoor air to improve indoor air quality.



EXCESS HUMIDITY CONTROL

Expels excess humidity and reduces the risk of window condensation, which prevents damage to and deterioration of your home.



RECIRCULATION

Features a recirculation setting, which allows you to filter your indoor air 24 hours a day and attain a consistent temperature throughout your whole home.



ENERGY STAR® CERTIFIED

Annual energy consumption reduced by 50% (HRV 7.1) and 25% (HRV 5.1).



HEAT RECOVERY

Constant supply of fresh, warm air, no unpleasant drafts and greater home comfort.



HEPA FILTRATION

- Captures 99.97% of all dust and particles, even those as small as 0.3 micron.
- Can help reduce allergy symptoms, asthma, recurring colds and persistent coughs.



WALL CONTROL

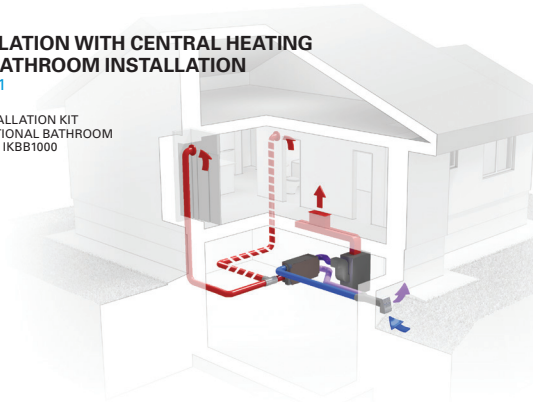


CHOOSE YOUR INSTALLATION TYPE

If your house has a forced-air system or baseboard heating, you're all set for central air exchange. Installation is quick, easy and safe.

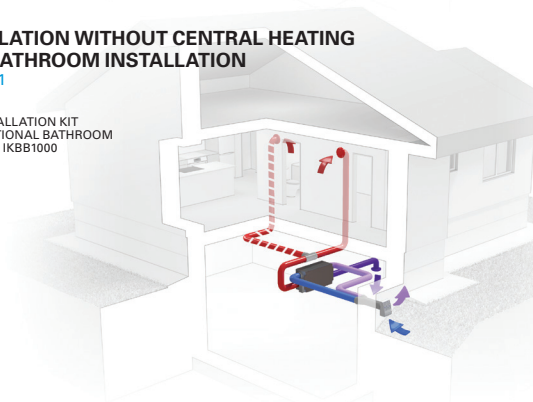
BASIC INSTALLATION WITH CENTRAL HEATING + OPTIONAL BATHROOM INSTALLATION

REQUIRES BASIC INSTALLATION KIT NO. IKS81000 AND OPTIONAL BATHROOM INSTALLATION KIT NO. IKB81000 (SOLD SEPARATELY).



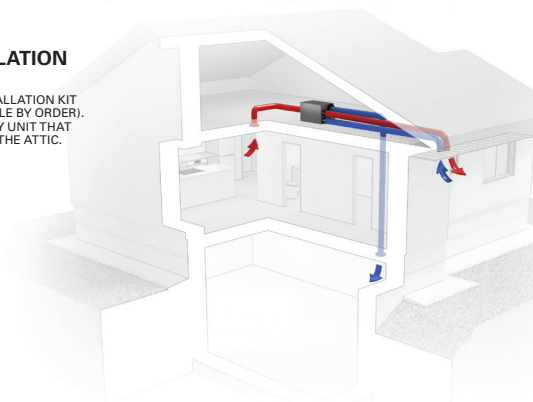
BASIC INSTALLATION WITHOUT CENTRAL HEATING + OPTIONAL BATHROOM INSTALLATION

REQUIRES BASIC INSTALLATION KIT NO. IKS81000 AND OPTIONAL BATHROOM INSTALLATION KIT NO. IKB81000 (SOLD SEPARATELY).



ATTIC INSTALLATION

REQUIRES ATTIC INSTALLATION KIT NO. EA20130 (AVAILABLE BY ORDER). THE HV 1.5 IS THE ONLY UNIT THAT CAN BE INSTALLED IN THE ATTIC.



- Fresh air
- Stale air
- Tempered air
- Bathroom option



Broan air exchangers are proudly made in Canada, in Drummondville, Qc.